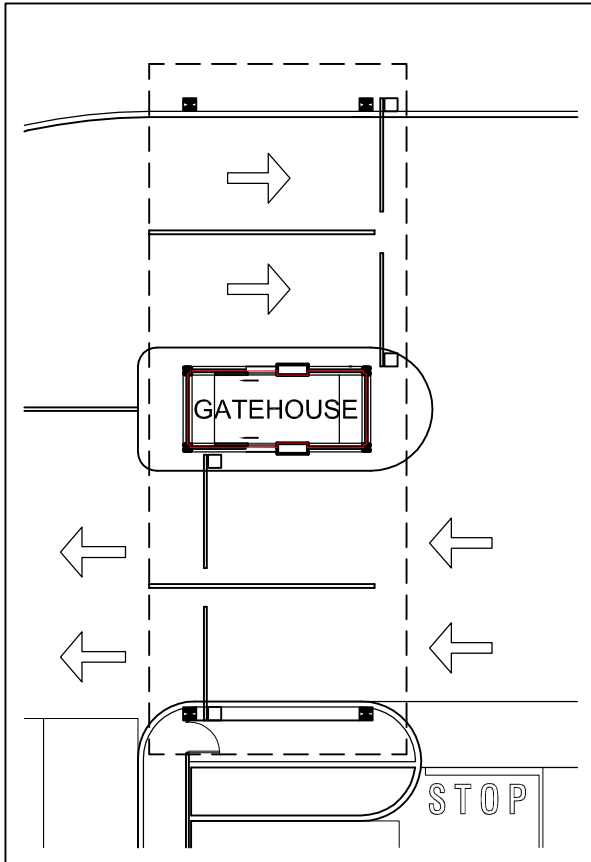
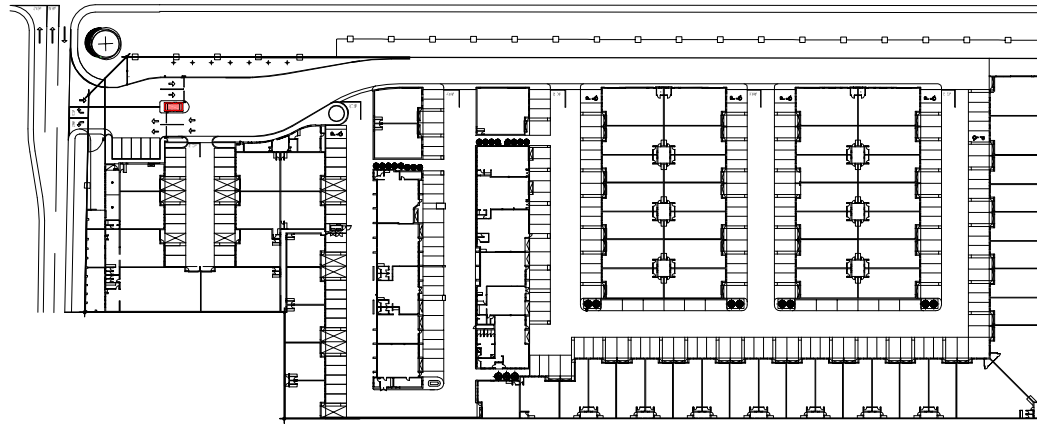


GATEHOUSE

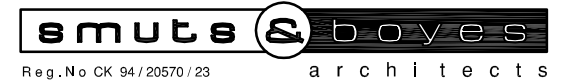
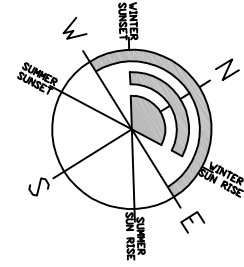
GROUND STOREY

AREA = 9.39m²



© COPYRIGHT:

Please note that the copyright of the literary works, artistic works and published editions contained herein is vested with SMUTS & BOYES ARCHITECTS cc. Any adaption, distribution, sale or for hire, or any form of reproduction of these works, in any part or in their entirety, by any party other than SMUTS & BOYES ARCHITECTS cc. is an infringement of this copyright, and SMUTS & BOYES ARCHITECTS cc. reserves the right to claim damages from any party infringing this copyright, unless these rights are varied in writing.



Reg.No CK 94/20570/23

architects

Prime Park, Unit 7C,
Tienie Meyer Bypass, Bellville,
Cape Town, 7530

T +27 64 773 4062

E koos@smutsandboyes.co.za
rob@smutsandboyes.co.za

- :

DALEGLLEN PROPERTIES
(THE TAMRIC TRUST)

PROJECT:

ADDITIONS TO EXISTING PROPERTY ON ERF 20984,
MARCONI BEAM, 1 SCHOOL STREET,
MILNERTON

DRAWING:

GROUND STOREY

SCALE:

DATE:

1 : 200

MARCH 2023

DRAWN:

CHECKED:

DW

KS

PROJECT NO:

DRAWING NO:

REVISION:

TLKM / 18

AREA-PH1.01

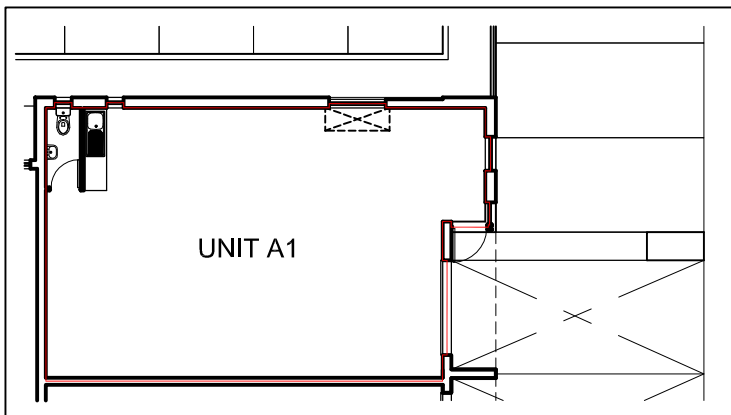
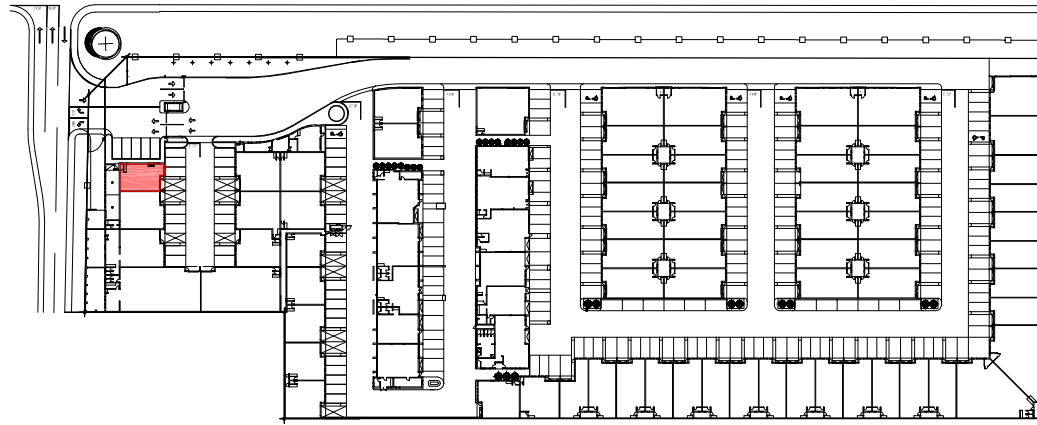
00

FOR INFORMATION

UNIT A1

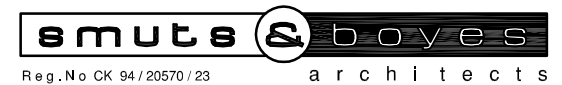
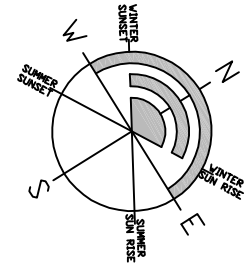
GROUND STOREY

AREA = 80.20m²



© COPYRIGHT:

Please note that the copyright of the literary works, artistic works and published editions contained herein is vested with SMUTS & BOYES ARCHITECTS cc. Any adaption, distribution, sale or for hire, or any form of reproduction of these works, in any part or in their entirety, by any party other than SMUTS & BOYES ARCHITECTS cc. is an infringement of this copyright, and SMUTS & BOYES ARCHITECTS cc. reserves the right to claim damages from any party infringing this copyright, unless these rights are varied in writing.



Reg.No CK 94/20570/23

architects

Prime Park, Unit 7C,

Tienie Meyer Bypass, Bellville,
Cape Town, 7530

T +27 64 773 4062

E koos@smutsandboyes.co.za
rob@smutsandboyes.co.za

- :

DALEGLLEN PROPERTIES
(THE TAMRIC TRUST)

PROJECT:

ADDITIONS TO EXISTING PROPERTY ON ERF 20984,
MARCONI BEAM, 1 SCHOOL STREET,
MILNERTON

DRAWING:

GROUND STOREY

SCALE:

DATE:

1 : 200

MARCH 2023

DRAWN:

CHECKED:

DW

KS

PROJECT NO:

DRAWING NO:

REVISION:

TLKM / 18

AREA-PH1.02

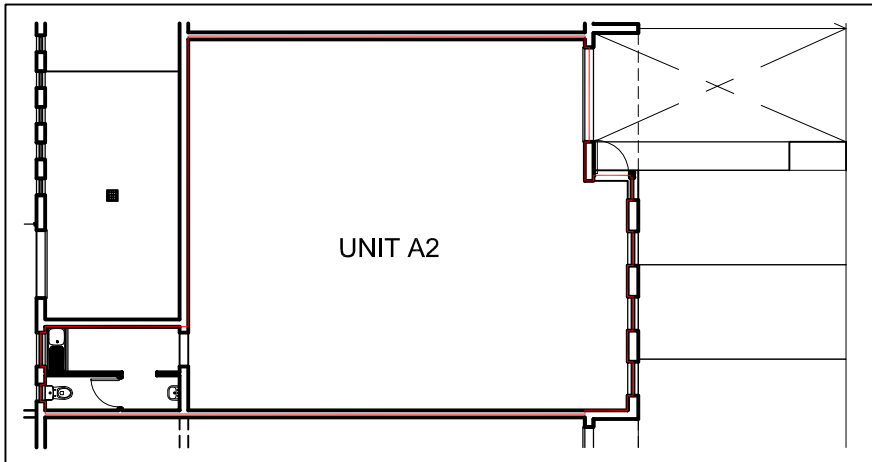
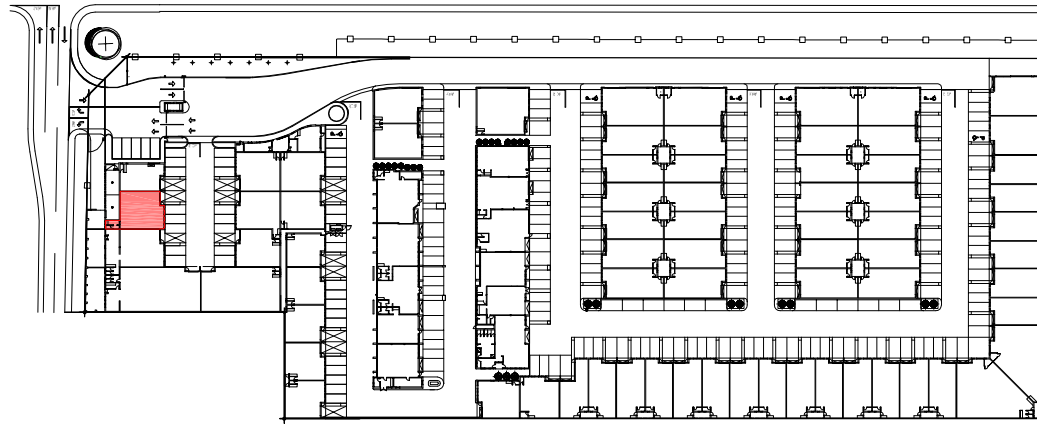
00

FOR INFORMATION

UNIT A2

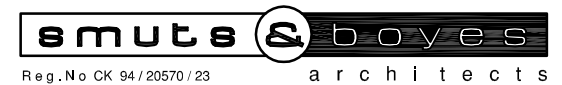
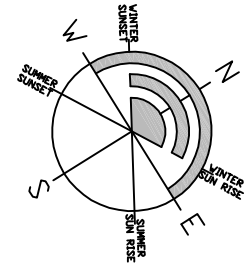
GROUND STOREY

AREA = 121.55m²



© COPYRIGHT:

Please note that the copyright of the literary works, artistic works and published editions contained herein is vested with SMUTS & BOYES ARCHITECTS cc. Any adaption, distribution, sale or for hire, or any form of reproduction of these works, in any part or in their entirety, by any party other than SMUTS & BOYES ARCHITECTS cc. is an infringement of this copyright, and SMUTS & BOYES ARCHITECTS cc. reserves the right to claim damages from any party infringing this copyright, unless these rights are varied in writing.



Reg.No CK 94/20570/23

architects

Prime Park, Unit 7C,

Tienie Meyer Bypass, Bellville,
Cape Town, 7530

T +27 64 773 4062

E koos@smutsandboyes.co.za
rob@smutsandboyes.co.za

- :

DALEGLLEN PROPERTIES
(THE TAMRIC TRUST)

PROJECT:

ADDITIONS TO EXISTING PROPERTY ON ERF 20984,
MARCONI BEAM, 1 SCHOOL STREET,
MILNERTON

DRAWING:

GROUND STOREY

SCALE:

DATE:

1 : 200

MARCH 2023

DRAWN:

CHECKED:

DW

KS

PROJECT NO:

DRAWING NO:

REVISION:

TLKM / 18

AREA-PH1.03

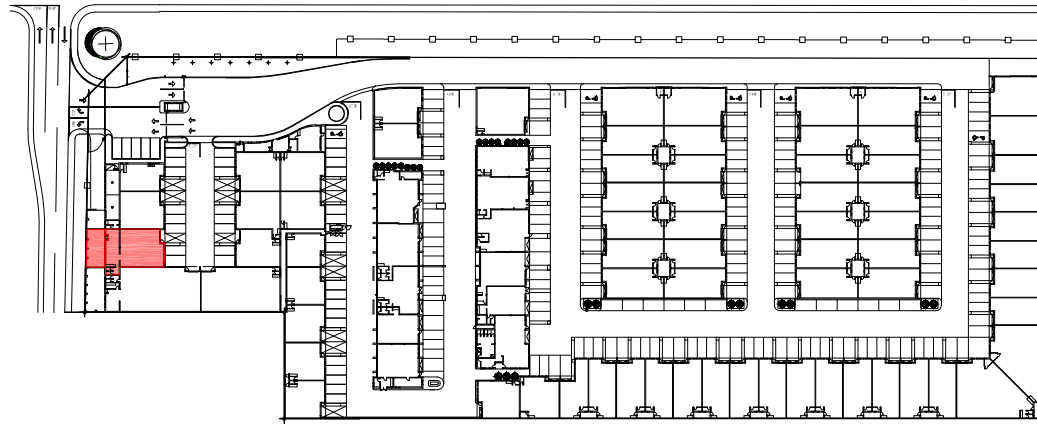
00

FOR INFORMATION

UNIT A3

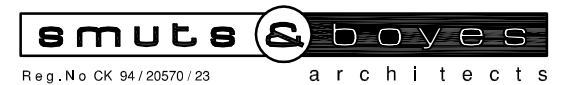
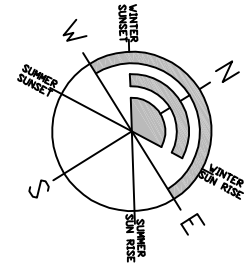
GROUND STOREY

AREA = 158.40m²
YARD = 47.48m²



© COPYRIGHT:

Please note that the copyright of the literary works, artistic works and published editions contained herein is vested with SMUTS & BOYES ARCHITECTS cc. Any adaption, distribution, sale or for hire, or any form of reproduction of these works, in any part or in their entirety, by any party other than SMUTS & BOYES ARCHITECTS cc. is an infringement of this copyright, and SMUTS & BOYES ARCHITECTS cc. reserves the right to claim damages from any party infringing this copyright, unless these rights are varied in writing.



Reg.No CK 94/20570/23

architects

Prime Park, Unit 7C,
Tienie Meyer Bypass, Bellville,
Cape Town, 7530

T +27 64 773 4062

E koos@smutsandboyes.co.za
rob@smutsandboyes.co.za

- :

DALEGLLEN PROPERTIES
(THE TAMRIC TRUST)

PROJECT:

ADDITIONS TO EXISTING PROPERTY ON ERF 20984,
MARCONI BEAM, 1 SCHOOL STREET,
MILNERTON

DRAWING:

GROUND STOREY

SCALE:

DATE:

1 : 200

MARCH 2023

DRAWN:

CHECKED:

DW

KS

PROJECT NO:

DRAWING NO:

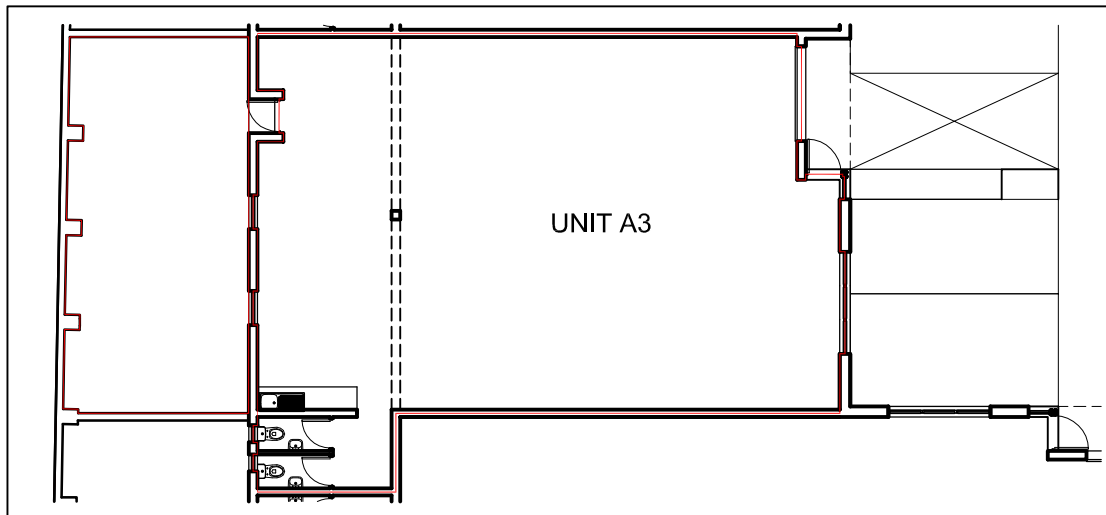
REVISION:

TLKM / 18

AREA-PH1.04

00

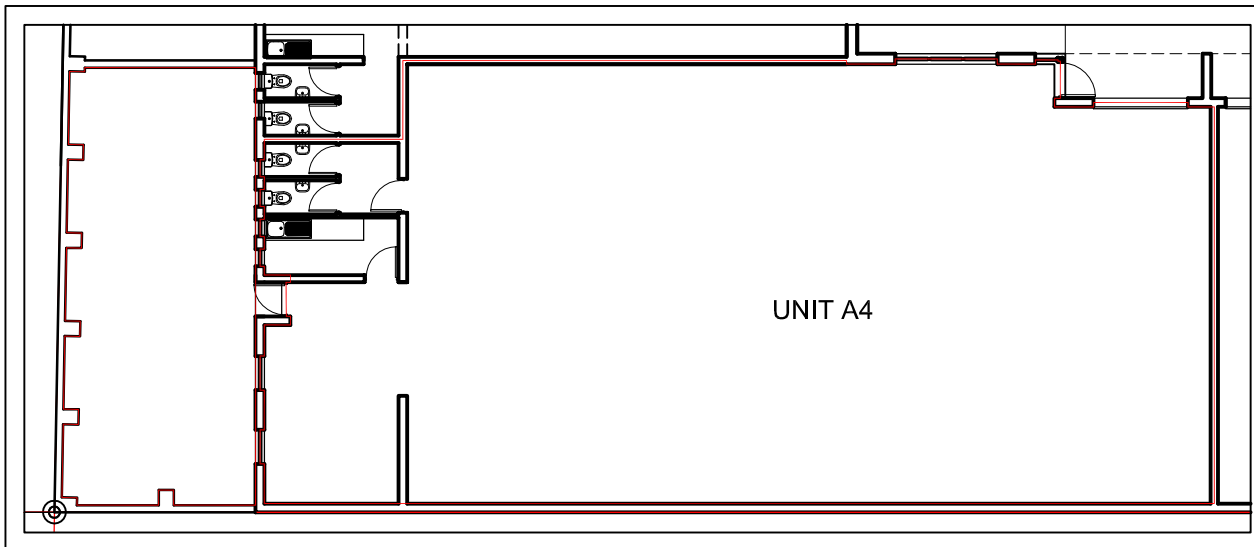
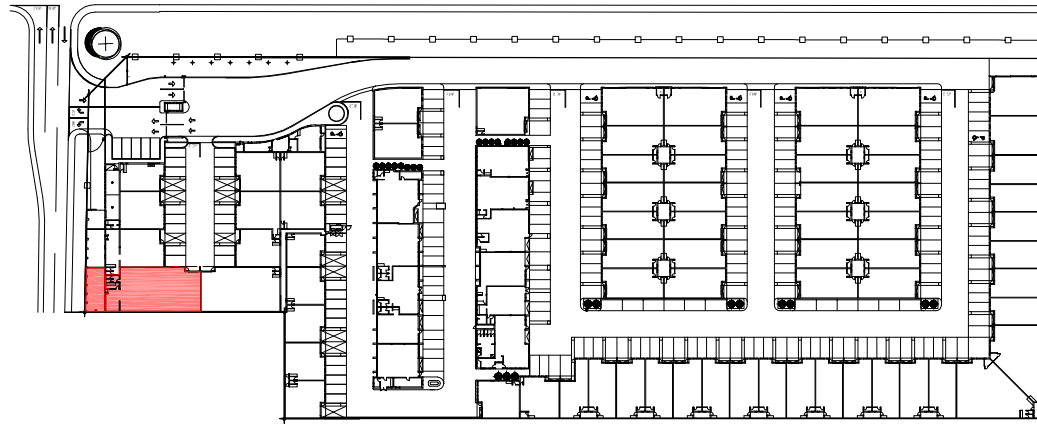
FOR INFORMATION



UNIT A4

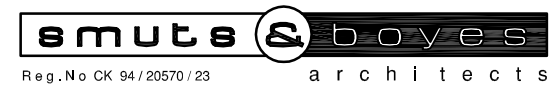
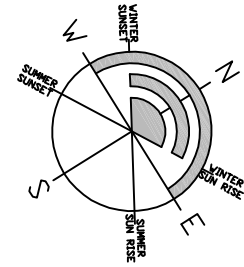
GROUND STOREY

AREA = 281.68m²
YARD = 57.21m²



© COPYRIGHT:

Please note that the copyright of the literary works, artistic works and published editions contained herein is vested with SMUTS & BOYES ARCHITECTS cc. Any adaption, distribution, sale or for hire, or any form of reproduction of these works, in any part or in their entirety, by any party other than SMUTS & BOYES ARCHITECTS cc. is an infringement of this copyright, and SMUTS & BOYES ARCHITECTS cc. reserves the right to claim damages from any party infringing this copyright, unless these rights are varied in writing.



Prime Park, Unit 7C,
Tienie Meyer Bypass, Bellville,
Cape Town, 7530

T +27 64 773 4062

E koos@smutsandboyes.co.za
rob@smutsandboyes.co.za

- :

DALEGLLEN PROPERTIES
(THE TAMRIC TRUST)

PROJECT:

ADDITIONS TO EXISTING PROPERTY ON ERF 20984,
MARCONI BEAM, 1 SCHOOL STREET,
MILNERTON

DRAWING:

GROUND STOREY

SCALE:

DATE:

1 : 200

MARCH 2023

DRAWN:

CHECKED:

DW

KS

PROJECT NO:

DRAWING NO:

REVISION:

TLKM / 18

AREA-PH1.05

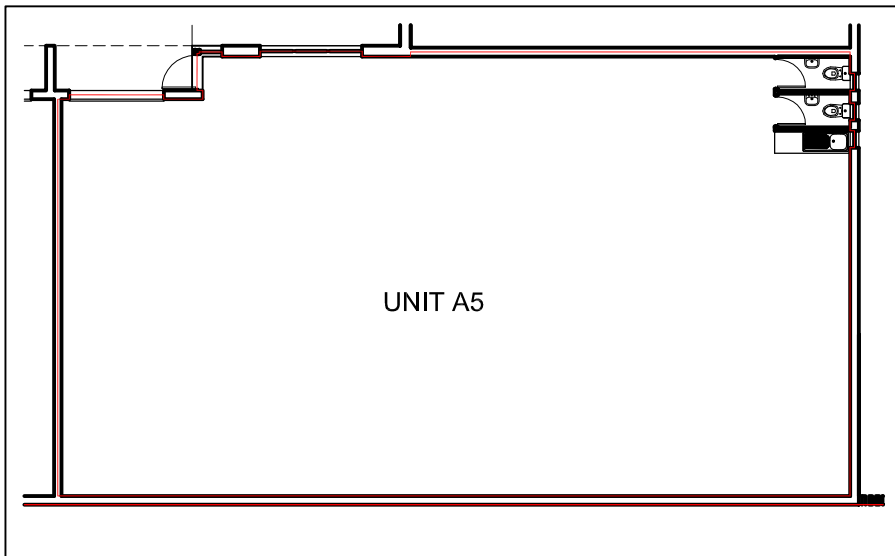
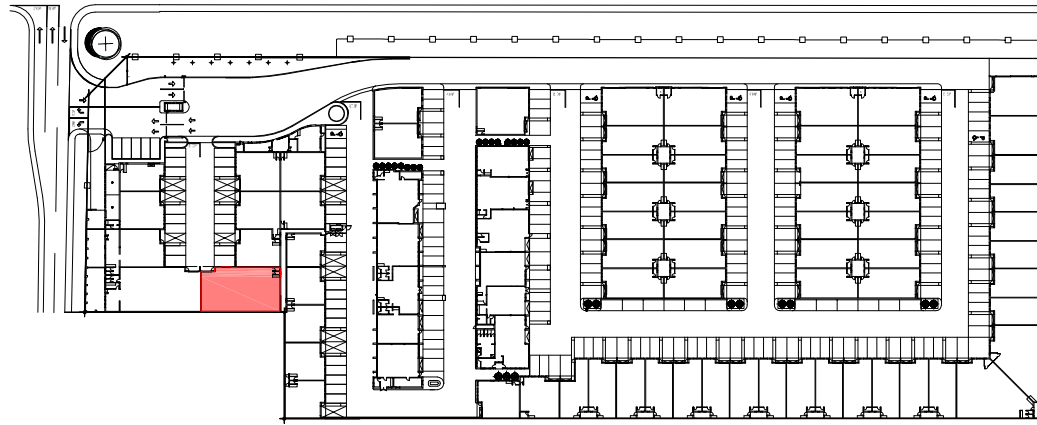
00

FOR INFORMATION

UNIT A5

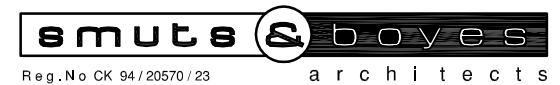
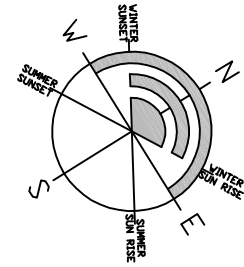
GROUND STOREY

AREA = 241.69m²



© COPYRIGHT:

Please note that the copyright of the literary works, artistic works and published editions contained herein is vested with SMUTS & BOYES ARCHITECTS cc. Any adaption, distribution, sale or for hire, or any form of reproduction of these works, in any part or in their entirety, by any party other than SMUTS & BOYES ARCHITECTS cc. is an infringement of this copyright, and SMUTS & BOYES ARCHITECTS cc. reserves the right to claim damages from any party infringing this copyright, unless these rights are varied in writing.



Reg.No CK 94/20570/23

architects

Prime Park, Unit 7C,
Tienie Meyer Bypass, Bellville,
Cape Town, 7530

T +27 64 773 4062

E koos@smutsandboyes.co.za
rob@smutsandboyes.co.za

- :

DALEGLLEN PROPERTIES
(THE TAMRIC TRUST)

PROJECT:

ADDITIONS TO EXISTING PROPERTY ON ERF 20984,
MARCONI BEAM, 1 SCHOOL STREET,
MILNERTON

DRAWING:

GROUND STOREY

SCALE:

DATE:

1 : 200

MARCH 2023

DRAWN:

CHECKED:

DW

KS

PROJECT NO:

DRAWING NO:

REVISION:

TLKM / 18

AREA-PH1.06

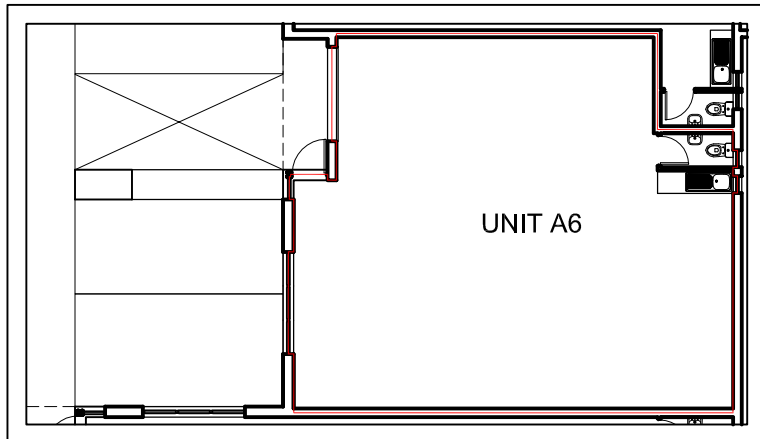
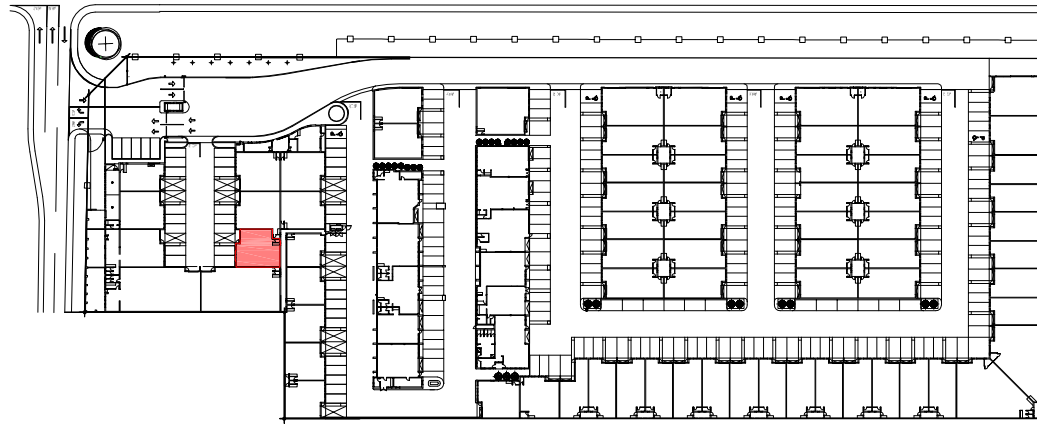
00

FOR INFORMATION

UNIT A6

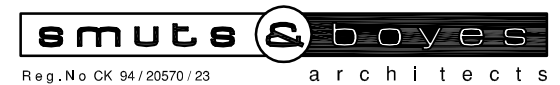
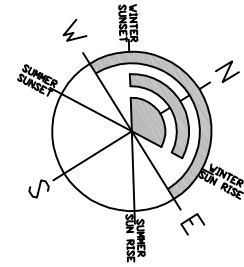
GROUND STOREY

AREA = 108.09m²



© COPYRIGHT:

Please note that the copyright of the literary works, artistic works and published editions contained herein is vested with SMUTS & BOYES ARCHITECTS cc. Any adaption, distribution, sale or for hire, or any form of reproduction of these works, in any part or in their entirety, by any party other than SMUTS & BOYES ARCHITECTS cc. is an infringement of this copyright, and SMUTS & BOYES ARCHITECTS cc. reserves the right to claim damages from any party infringing this copyright, unless these rights are varied in writing.



Reg.No CK 94/20570/23

architects

Prime Park, Unit 7C,

Tienie Meyer Bypass, Bellville,
Cape Town, 7530

T +27 64 773 4062

E koos@smutsandboyes.co.za
rob@smutsandboyes.co.za

- :

DALEGLLEN PROPERTIES
(THE TAMRIC TRUST)

PROJECT:

ADDITIONS TO EXISTING PROPERTY ON ERF 20984,
MARCONI BEAM, 1 SCHOOL STREET,
MILNERTON

DRAWING:

GROUND STOREY

SCALE:

DATE:

1 : 200

MARCH 2023

DRAWN:

CHECKED:

DW

KS

PROJECT NO:

DRAWING NO:

REVISION:

TLKM / 18

AREA-PH1.07

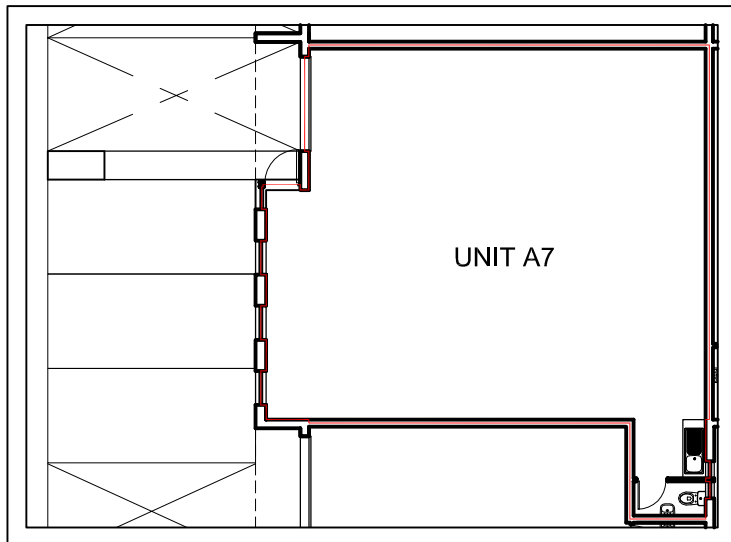
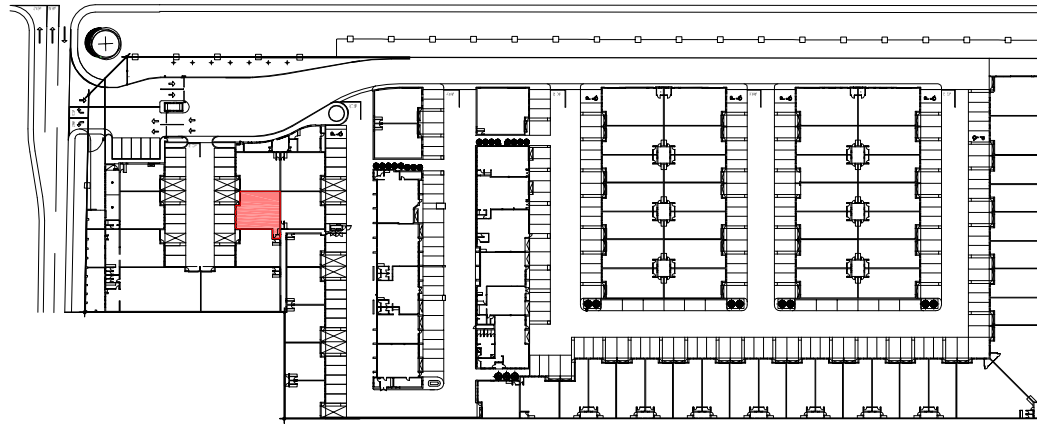
00

FOR INFORMATION

UNIT A7

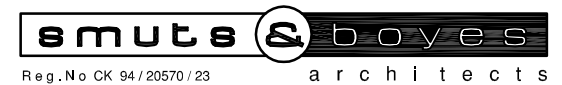
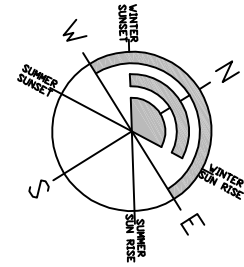
GROUND STOREY

AREA = 118.82m²



© COPYRIGHT:

Please note that the copyright of the literary works, artistic works and published editions contained herein is vested with SMUTS & BOYES ARCHITECTS cc. Any adaption, distribution, sale or for hire, or any form of reproduction of these works, in any part or in their entirety, by any party other than SMUTS & BOYES ARCHITECTS cc. is an infringement of this copyright, and SMUTS & BOYES ARCHITECTS cc. reserves the right to claim damages from any party infringing this copyright, unless these rights are varied in writing.



Prime Park, Unit 7C,
Tienie Meyer Bypass, Bellville,
Cape Town, 7530

T +27 64 773 4062

E koos@smutsandboyes.co.za
rob@smutsandboyes.co.za

- :

DALEGLLEN PROPERTIES
(THE TAMRIC TRUST)

PROJECT:

ADDITIONS TO EXISTING PROPERTY ON ERF 20984,
MARCONI BEAM, 1 SCHOOL STREET,
MILNERTON

DRAWING:

GROUND STOREY

SCALE:

DATE:

1 : 200

MARCH 2023

DRAWN:

CHECKED:

DW

KS

PROJECT NO:

DRAWING NO:

REVISION:

TLKM / 18

AREA-PH1.08

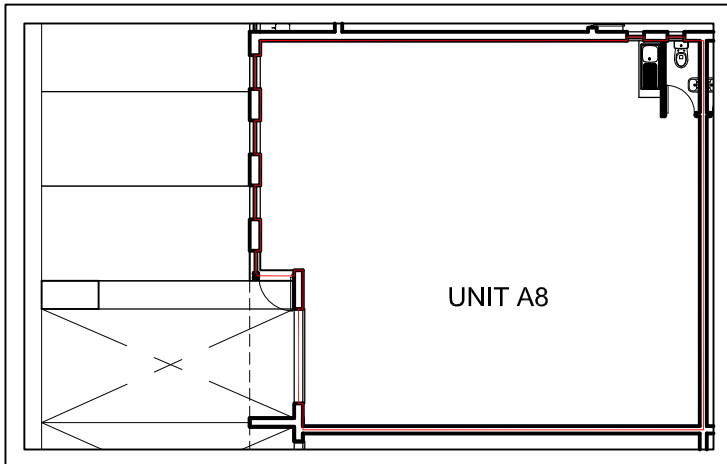
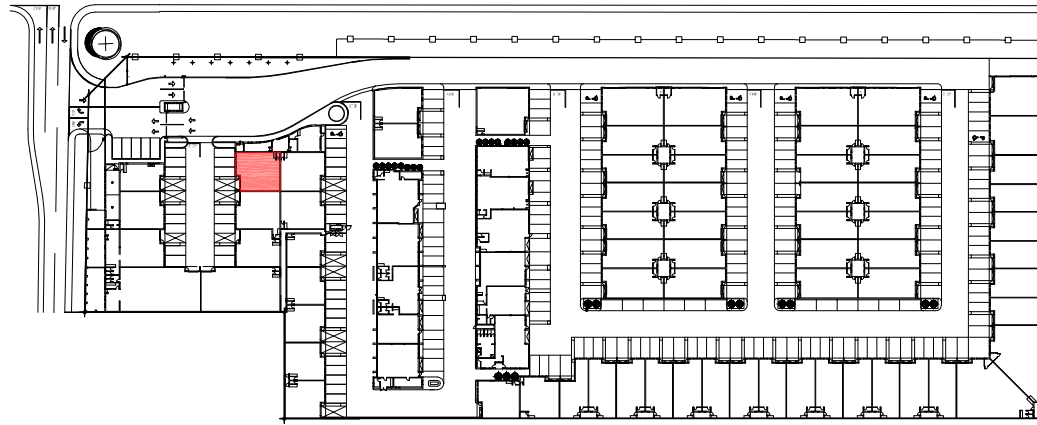
00

FOR INFORMATION

UNIT A8

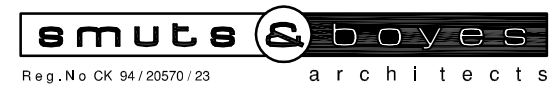
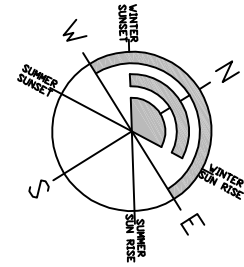
GROUND STOREY

AREA = 116.84m²



© COPYRIGHT:

Please note that the copyright of the literary works, artistic works and published editions contained herein is vested with SMUTS & BOYES ARCHITECTS cc. Any adaption, distribution, sale or for hire, or any form of reproduction of these works, in any part or in their entirety, by any party other than SMUTS & BOYES ARCHITECTS cc. is an infringement of this copyright, and SMUTS & BOYES ARCHITECTS cc. reserves the right to claim damages from any party infringing this copyright, unless these rights are varied in writing.



Reg.No CK 94/20570/23

architects

Prime Park, Unit 7C,
Tienie Meyer Bypass, Bellville,
Cape Town, 7530

T +27 64 773 4062

E koos@smutsandboyes.co.za
rob@smutsandboyes.co.za

- :

DALEGLLEN PROPERTIES
(THE TAMRIC TRUST)

PROJECT:

ADDITIONS TO EXISTING PROPERTY ON ERF 20984,
MARCONI BEAM, 1 SCHOOL STREET,
MILNERTON

DRAWING:

GROUND STOREY

SCALE:

DATE:

1 : 200

MARCH 2023

DRAWN:

CHECKED:

DW

KS

PROJECT NO:

DRAWING NO:

REVISION:

TLKM / 18

AREA-PH1.09

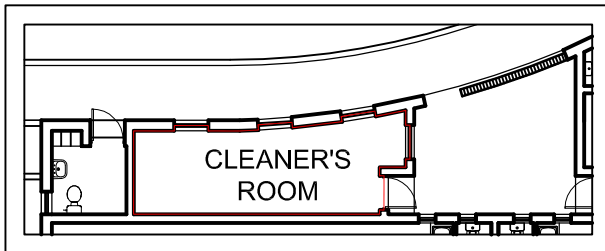
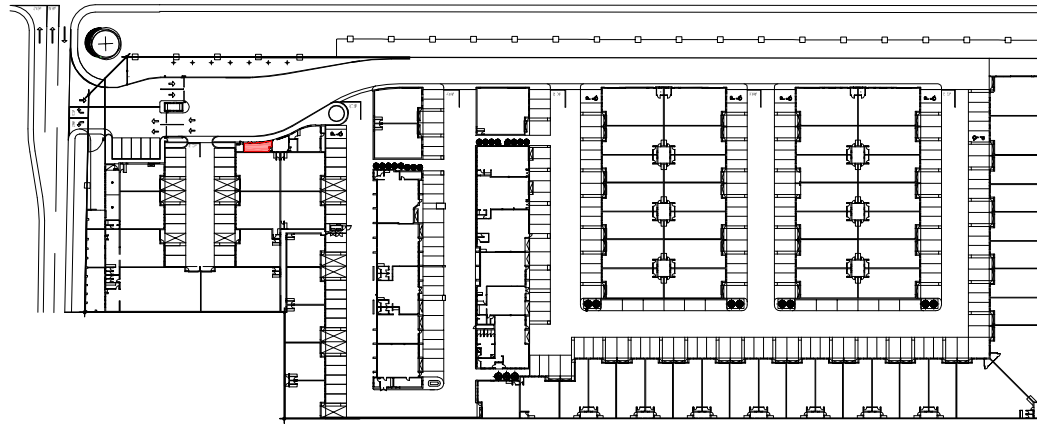
00

FOR INFORMATION

CLEANER'S ROOM

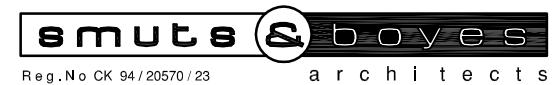
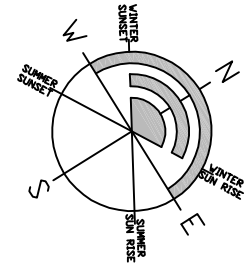
GROUND STOREY

AREA = 16.50m²



© COPYRIGHT:

Please note that the copyright of the literary works, artistic works and published editions contained herein is vested with SMUTS & BOYES ARCHITECTS cc. Any adaption, distribution, sale or for hire, or any form of reproduction of these works, in any part or in their entirety, by any party other than SMUTS & BOYES ARCHITECTS cc. is an infringement of this copyright, and SMUTS & BOYES ARCHITECTS cc. reserves the right to claim damages from any party infringing this copyright, unless these rights are varied in writing.



Reg.No CK 94/20570/23

architects

Prime Park, Unit 7C,
Tienie Meyer Bypass, Bellville,
Cape Town, 7530

T +27 64 773 4062

E koos@smutsandboyes.co.za
rob@smutsandboyes.co.za

- :

DALEGLLEN PROPERTIES
(THE TAMRIC TRUST)

PROJECT:

ADDITIONS TO EXISTING PROPERTY ON ERF 20984,
MARCONI BEAM, 1 SCHOOL STREET,
MILNERTON

DRAWING:

GROUND STOREY

SCALE:

DATE:

1 : 200

MARCH 2023

DRAWN:

CHECKED:

DW

KS

PROJECT NO:

DRAWING NO:

REVISION:

TLKM / 18

AREA-PH1.10

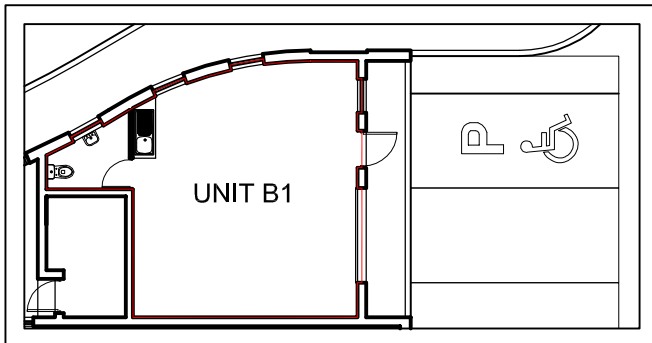
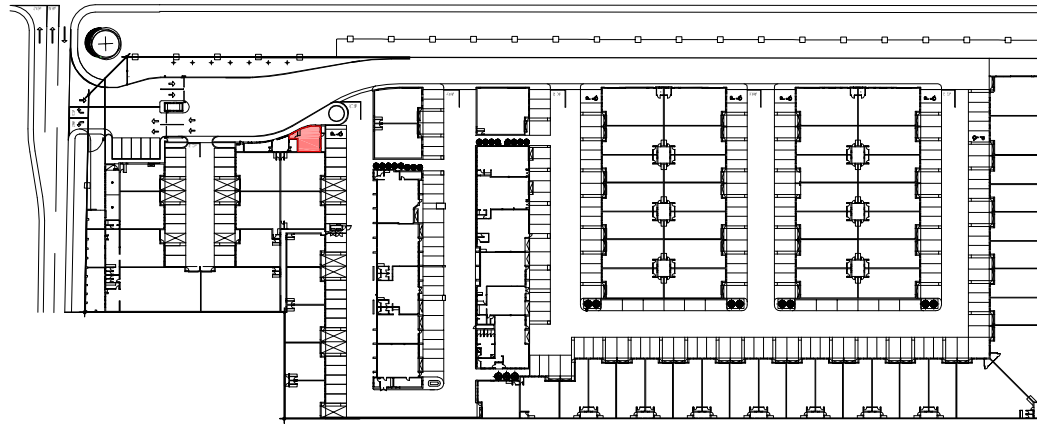
00

FOR INFORMATION

UNIT B1

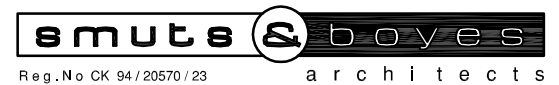
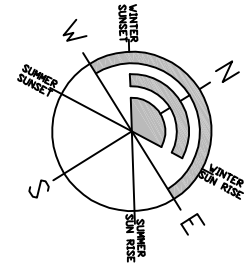
GROUND STOREY

AREA = 42.67m²



© COPYRIGHT:

Please note that the copyright of the literary works, artistic works and published editions contained herein is vested with SMUTS & BOYES ARCHITECTS cc. Any adaption, distribution, sale or for hire, or any form of reproduction of these works, in any part or in their entirety, by any party other than SMUTS & BOYES ARCHITECTS cc. is an infringement of this copyright, and SMUTS & BOYES ARCHITECTS cc. reserves the right to claim damages from any party infringing this copyright, unless these rights are varied in writing.



Reg.No CK 94/20570/23

architects

Prime Park, Unit 7C,
Tienie Meyer Bypass, Bellville,
Cape Town, 7530

T +27 64 773 4062

E koos@smutsandboyes.co.za
rob@smutsandboyes.co.za

- :

DALEGLLEN PROPERTIES
(THE TAMRIC TRUST)

PROJECT:

ADDITIONS TO EXISTING PROPERTY ON ERF 20984,
MARCONI BEAM, 1 SCHOOL STREET,
MILNERTON

DRAWING:

GROUND STOREY

SCALE:

DATE:

1 : 200

MARCH 2023

DRAWN:

CHECKED:

DW

KS

PROJECT NO:

DRAWING NO:

REVISION:

TLKM / 18

AREA-PH1.11

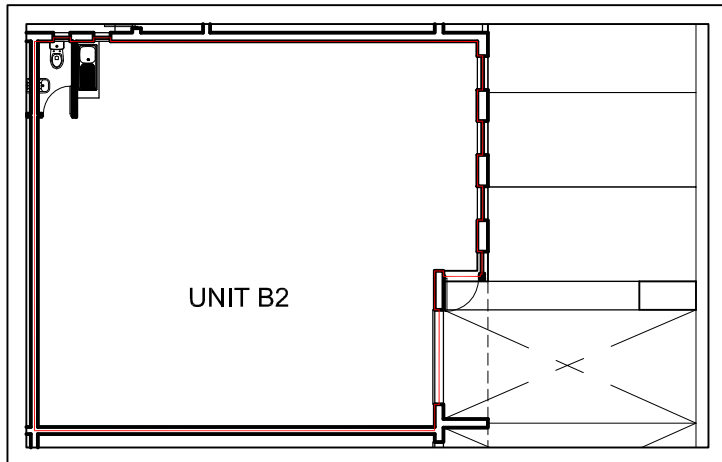
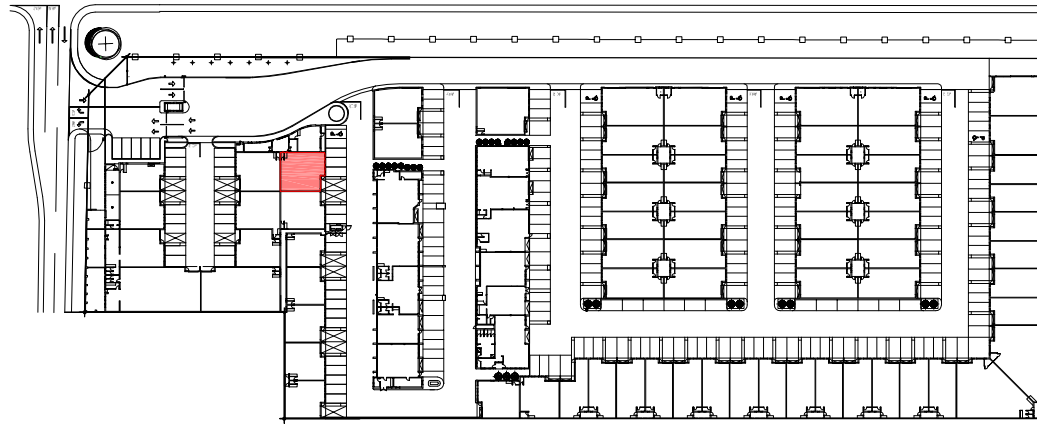
00

FOR INFORMATION

UNIT B2

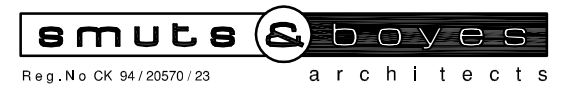
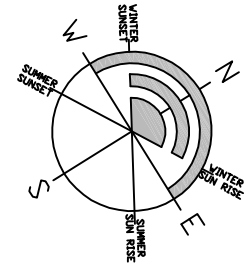
GROUND STOREY

AREA = 116.84m²



© COPYRIGHT:

Please note that the copyright of the literary works, artistic works and published editions contained herein is vested with SMUTS & BOYES ARCHITECTS cc. Any adaption, distribution, sale or for hire, or any form of reproduction of these works, in any part or in their entirety, by any party other than SMUTS & BOYES ARCHITECTS cc. is an infringement of this copyright, and SMUTS & BOYES ARCHITECTS cc. reserves the right to claim damages from any party infringing this copyright, unless these rights are varied in writing.



Reg.No CK 94/20570/23

architects

Prime Park, Unit 7C,
Tienie Meyer Bypass, Bellville,
Cape Town, 7530

T +27 64 773 4062

E koos@smutsandboyes.co.za
rob@smutsandboyes.co.za

- :

DALEGLLEN PROPERTIES
(THE TAMRIC TRUST)

PROJECT:

ADDITIONS TO EXISTING PROPERTY ON ERF 20984,
MARCONI BEAM, 1 SCHOOL STREET,
MILNERTON

DRAWING:

GROUND STOREY

SCALE:

DATE:

1 : 200

MARCH 2023

DRAWN:

CHECKED:

DW

KS

PROJECT NO:

DRAWING NO:

REVISION:

TLKM / 18

AREA-PH1.12

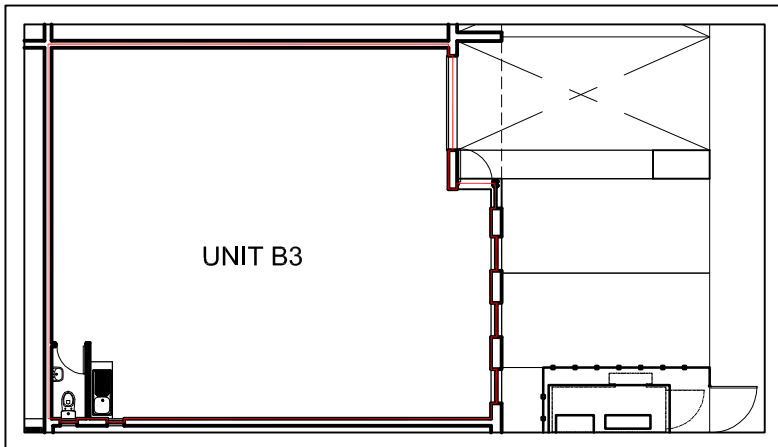
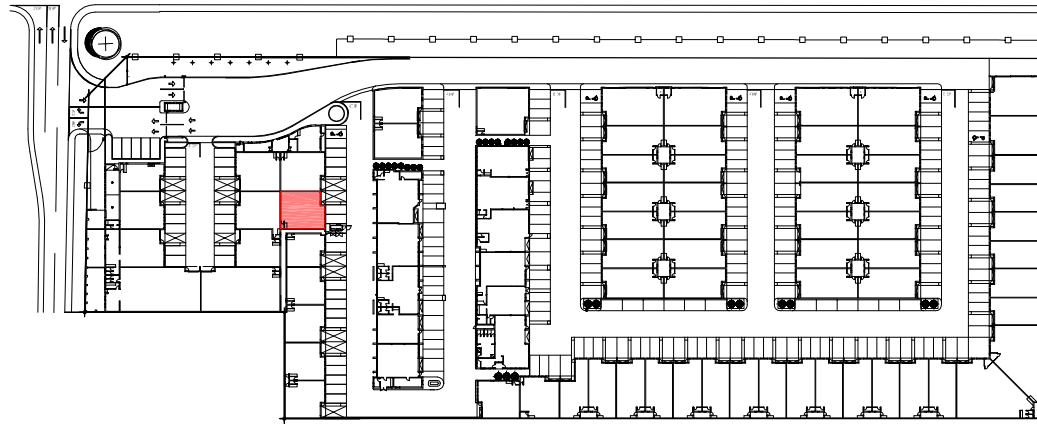
00

FOR INFORMATION

UNIT B3

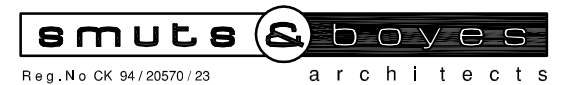
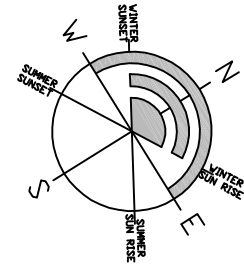
GROUND STOREY

AREA = 112.71m²



© COPYRIGHT:

Please note that the copyright of the literary works, artistic works and published editions contained herein is vested with SMUTS & BOYES ARCHITECTS cc. Any adaption, distribution, sale or for hire, or any form of reproduction of these works, in any part or in their entirety, by any party other than SMUTS & BOYES ARCHITECTS cc. is an infringement of this copyright, and SMUTS & BOYES ARCHITECTS cc. reserves the right to claim damages from any party infringing this copyright, unless these rights are varied in writing.



Prime Park, Unit 7C,
Tienie Meyer Bypass, Bellville,
Cape Town, 7530

T +27 64 773 4062

E koos@smutsandboyes.co.za
rob@smutsandboyes.co.za

- :

DALEGLLEN PROPERTIES
(THE TAMRIC TRUST)

PROJECT:

ADDITIONS TO EXISTING PROPERTY ON ERF 20984,
MARCONI BEAM, 1 SCHOOL STREET,
MILNERTON

DRAWING:

GROUND STOREY

SCALE:

DATE:

1 : 200

MARCH 2023

DRAWN:

CHECKED:

DW

KS

PROJECT NO:

DRAWING NO:

REVISION:

TLKM / 18

AREA-PH1.13

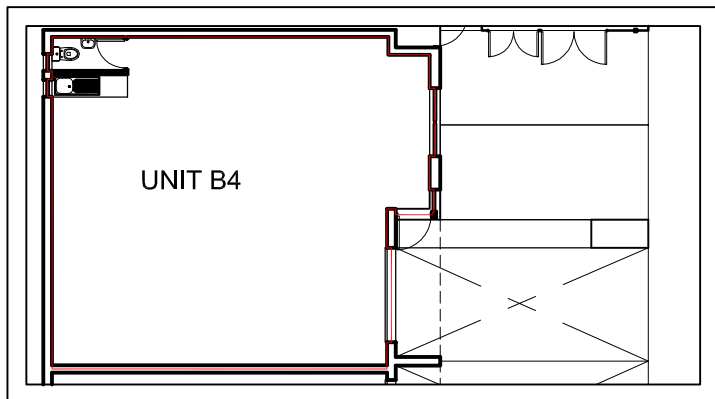
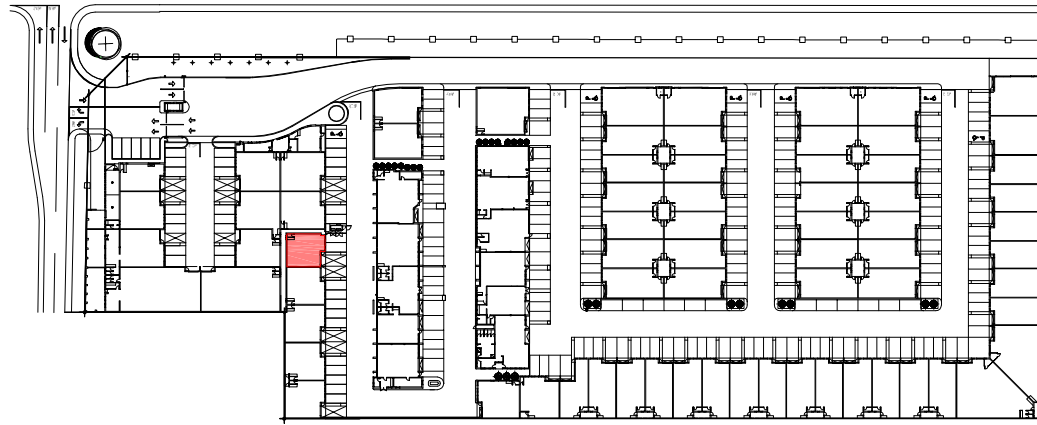
00

FOR INFORMATION

UNIT B4

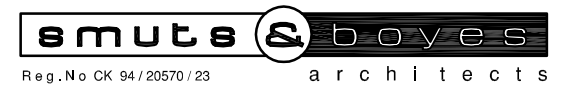
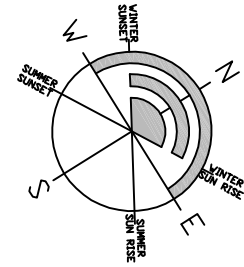
GROUND STOREY

AREA = 83.31m²



© COPYRIGHT:

Please note that the copyright of the literary works, artistic works and published editions contained herein is vested with SMUTS & BOYES ARCHITECTS cc. Any adaption, distribution, sale or for hire, or any form of reproduction of these works, in any part or in their entirety, by any party other than SMUTS & BOYES ARCHITECTS cc. is an infringement of this copyright, and SMUTS & BOYES ARCHITECTS cc. reserves the right to claim damages from any party infringing this copyright, unless these rights are varied in writing.



Reg.No CK 94/20570/23

architects

Prime Park, Unit 7C,

Tienie Meyer Bypass, Bellville,
Cape Town, 7530

T +27 64 773 4062

E koos@smutsandboyes.co.za
rob@smutsandboyes.co.za

- :

DALEGLLEN PROPERTIES
(THE TAMRIC TRUST)

PROJECT:

ADDITIONS TO EXISTING PROPERTY ON ERF 20984,
MARCONI BEAM, 1 SCHOOL STREET,
MILNERTON

DRAWING:

GROUND STOREY

SCALE:

DATE:

1 : 200

MARCH 2023

DRAWN:

CHECKED:

DW

KS

PROJECT NO:

DRAWING NO:

REVISION:

TLKM / 18

AREA-PH1.14

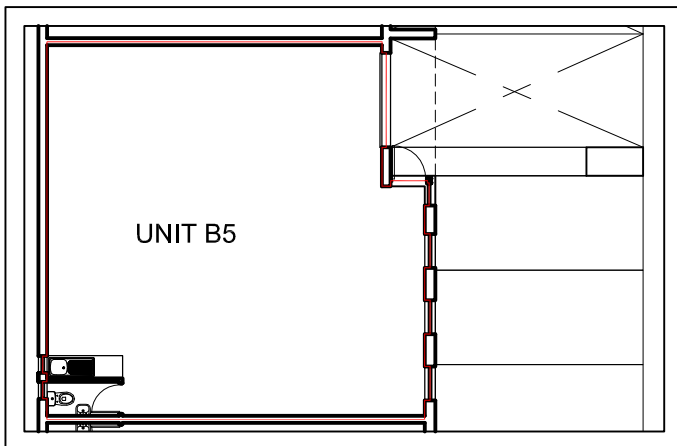
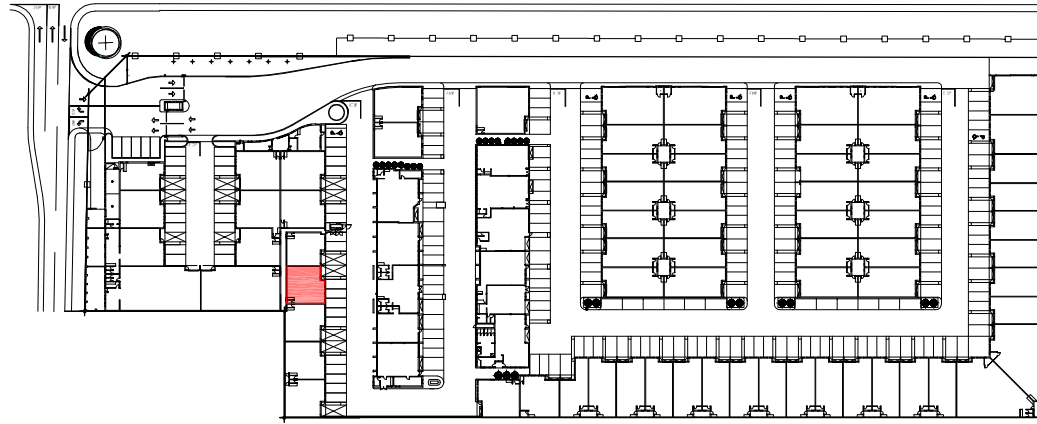
00

FOR INFORMATION

UNIT B5

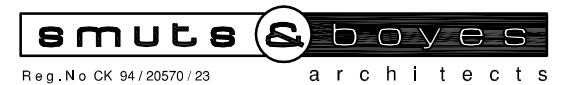
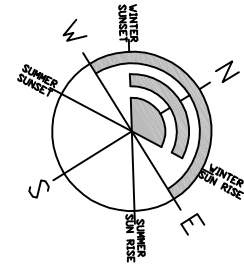
GROUND STOREY

AREA = 96.46m²



© COPYRIGHT:

Please note that the copyright of the literary works, artistic works and published editions contained herein is vested with SMUTS & BOYES ARCHITECTS cc. Any adaption, distribution, sale or for hire, or any form of reproduction of these works, in any part or in their entirety, by any party other than SMUTS & BOYES ARCHITECTS cc. is an infringement of this copyright, and SMUTS & BOYES ARCHITECTS cc. reserves the right to claim damages from any party infringing this copyright, unless these rights are varied in writing.



Prime Park, Unit 7C,
Tienie Meyer Bypass, Bellville,
Cape Town, 7530

T +27 64 773 4062

E koos@smutsandboyes.co.za
rob@smutsandboyes.co.za

- :

DALEGLLEN PROPERTIES
(THE TAMRIC TRUST)

PROJECT:

ADDITIONS TO EXISTING PROPERTY ON ERF 20984,
MARCONI BEAM, 1 SCHOOL STREET,
MILNERTON

DRAWING:

GROUND STOREY

SCALE:

DATE:

1 : 200

MARCH 2023

DRAWN:

CHECKED:

DW

KS

PROJECT NO:

DRAWING NO:

REVISION:

TLKM / 18

AREA-PH1.15

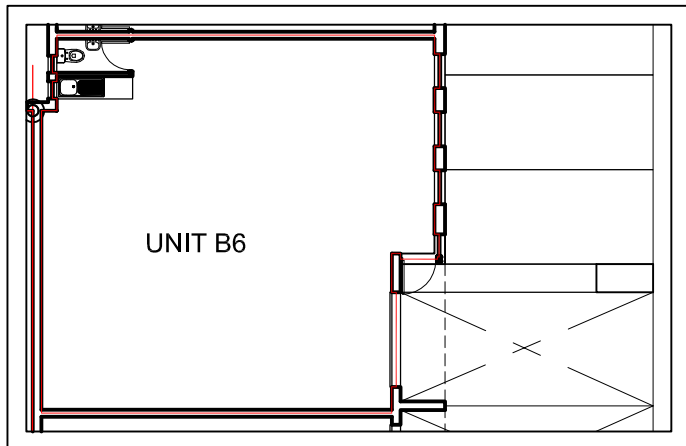
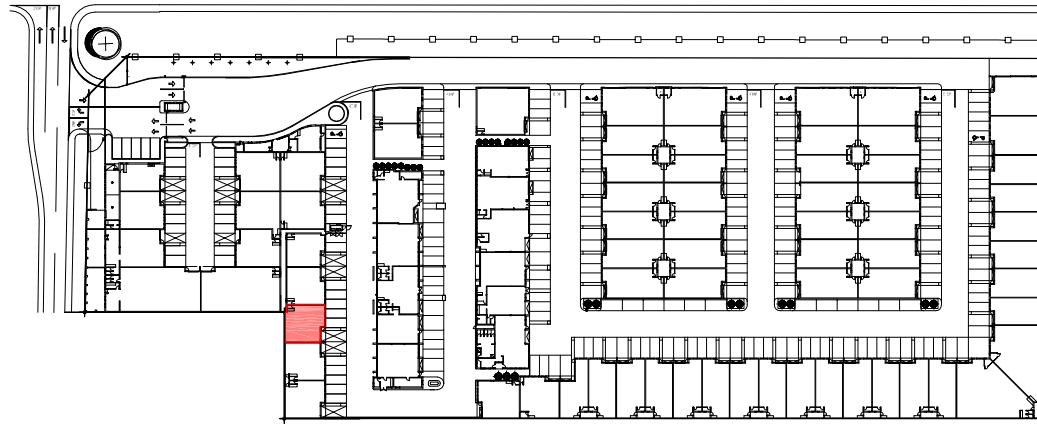
00

FOR INFORMATION

UNIT B6

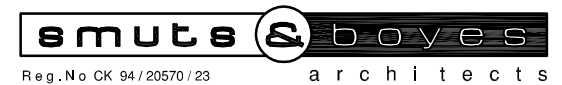
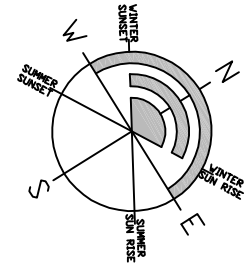
GROUND STOREY

AREA = 99.36m²



© COPYRIGHT:

Please note that the copyright of the literary works, artistic works and published editions contained herein is vested with SMUTS & BOYES ARCHITECTS cc. Any adaption, distribution, sale or for hire, or any form of reproduction of these works, in any part or in their entirety, by any party other than SMUTS & BOYES ARCHITECTS cc. is an infringement of this copyright, and SMUTS & BOYES ARCHITECTS cc. reserves the right to claim damages from any party infringing this copyright, unless these rights are varied in writing.



Prime Park, Unit 7C,
Tienie Meyer Bypass, Bellville,
Cape Town, 7530

T +27 64 773 4062

E koos@smutsandboyes.co.za
rob@smutsandboyes.co.za

- :

DALEGLLEN PROPERTIES
(THE TAMRIC TRUST)

PROJECT:

ADDITIONS TO EXISTING PROPERTY ON ERF 20984,
MARCONI BEAM, 1 SCHOOL STREET,
MILNERTON

DRAWING:

GROUND STOREY

SCALE:

DATE:

1 : 200

MARCH 2023

DRAWN:

CHECKED:

DW

KS

PROJECT NO:

DRAWING NO:

REVISION:

TLKM / 18

AREA-PH1.16

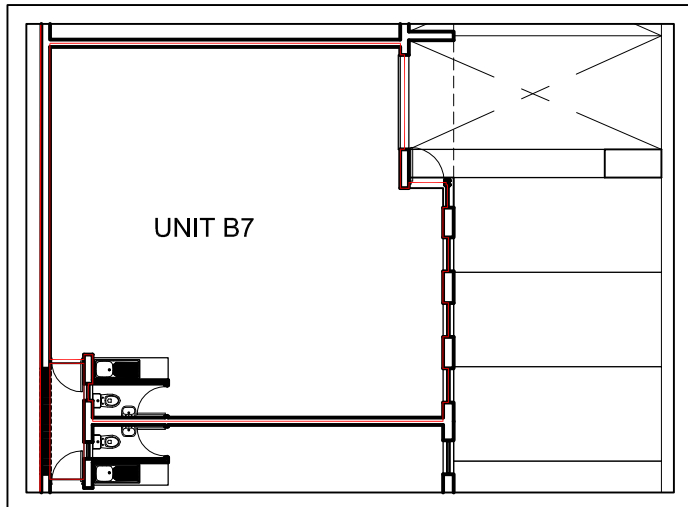
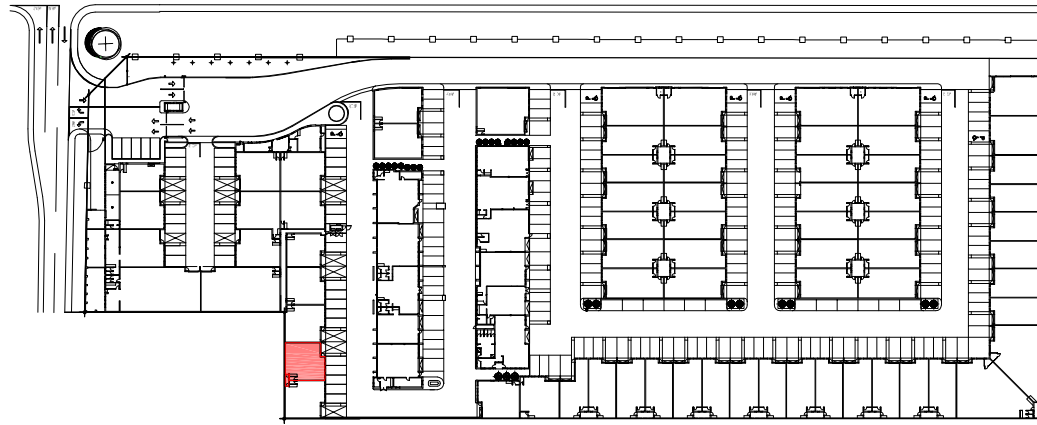
00

FOR INFORMATION

UNIT B7

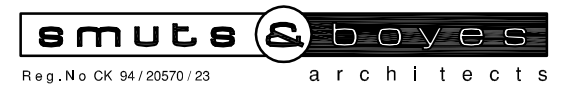
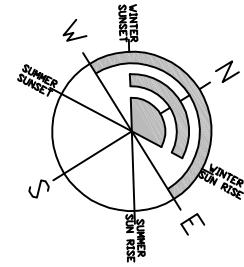
GROUND STOREY

AREA = 98.69m²
YARD = 2.76m² (common)



© COPYRIGHT:

Please note that the copyright of the literary works, artistic works and published editions contained herein is vested with SMUTS & BOYES ARCHITECTS cc. Any adaption, distribution, sale or for hire, or any form of reproduction of these works, in any part or in their entirety, by any party other than SMUTS & BOYES ARCHITECTS cc. is an infringement of this copyright, and SMUTS & BOYES ARCHITECTS cc. reserves the right to claim damages from any party infringing this copyright, unless these rights are varied in writing.



Prime Park, Unit 7C,
Tienie Meyer Bypass, Bellville,
Cape Town, 7530

T +27 64 773 4062

E koos@smutsandboyes.co.za
rob@smutsandboyes.co.za

- :

DALEGLLEN PROPERTIES
(THE TAMRIC TRUST)

PROJECT:

ADDITIONS TO EXISTING PROPERTY ON ERF 20984,
MARCONI BEAM, 1 SCHOOL STREET,
MILNERTON

DRAWING:

GROUND STOREY

SCALE:

DATE:

1 : 200

MARCH 2023

DRAWN:

CHECKED:

DW

KS

PROJECT NO:

DRAWING NO:

REVISION:

TLKM / 18

AREA-PH1.17

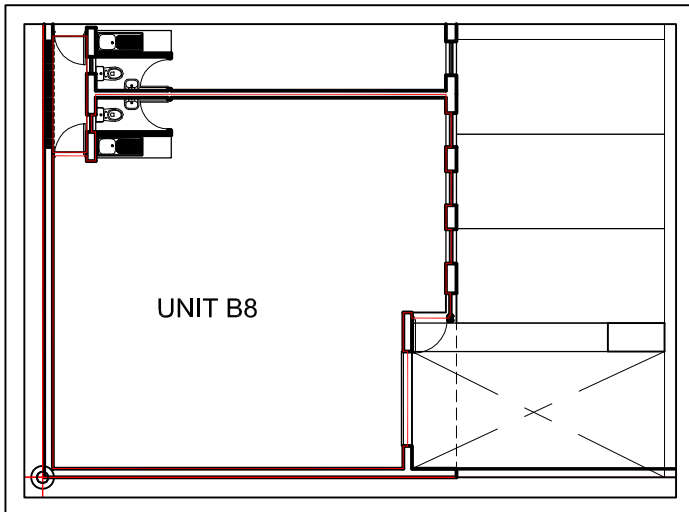
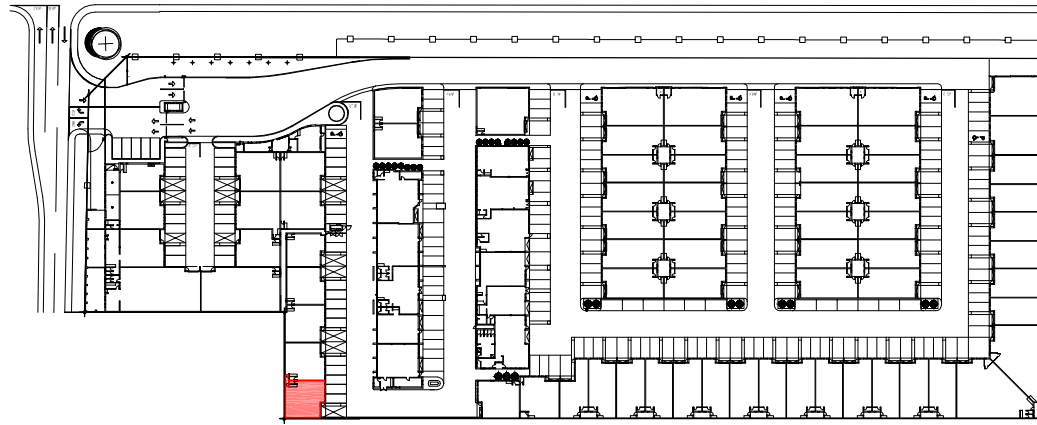
00

FOR INFORMATION

UNIT B8

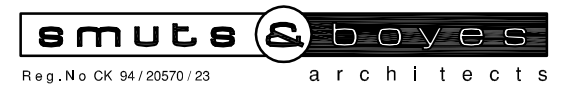
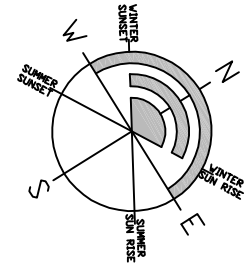
GROUND STOREY

AREA = 97.37m²
YARD = 2.76m² (common)



© COPYRIGHT:

Please note that the copyright of the literary works, artistic works and published editions contained herein is vested with SMUTS & BOYES ARCHITECTS cc. Any adaption, distribution, sale or for hire, or any form of reproduction of these works, in any part or in their entirety, by any party other than SMUTS & BOYES ARCHITECTS cc. is an infringement of this copyright, and SMUTS & BOYES ARCHITECTS cc. reserves the right to claim damages from any party infringing this copyright, unless these rights are varied in writing.



Reg.No CK 94/20570/23

architects

Prime Park, Unit 7C,
Tienie Meyer Bypass, Bellville,
Cape Town, 7530

T +27 64 773 4062

E koos@smutsandboyes.co.za
rob@smutsandboyes.co.za

- :

DALEGLLEN PROPERTIES
(THE TAMRIC TRUST)

PROJECT:

ADDITIONS TO EXISTING PROPERTY ON ERF 20984,
MARCONI BEAM, 1 SCHOOL STREET,
MILNERTON

DRAWING:

GROUND STOREY

SCALE:

DATE:

1 : 200

MARCH 2023

DRAWN:

CHECKED:

DW

KS

PROJECT NO:

DRAWING NO:

REVISION:

TLKM / 18

AREA-PH1.18

00

FOR INFORMATION