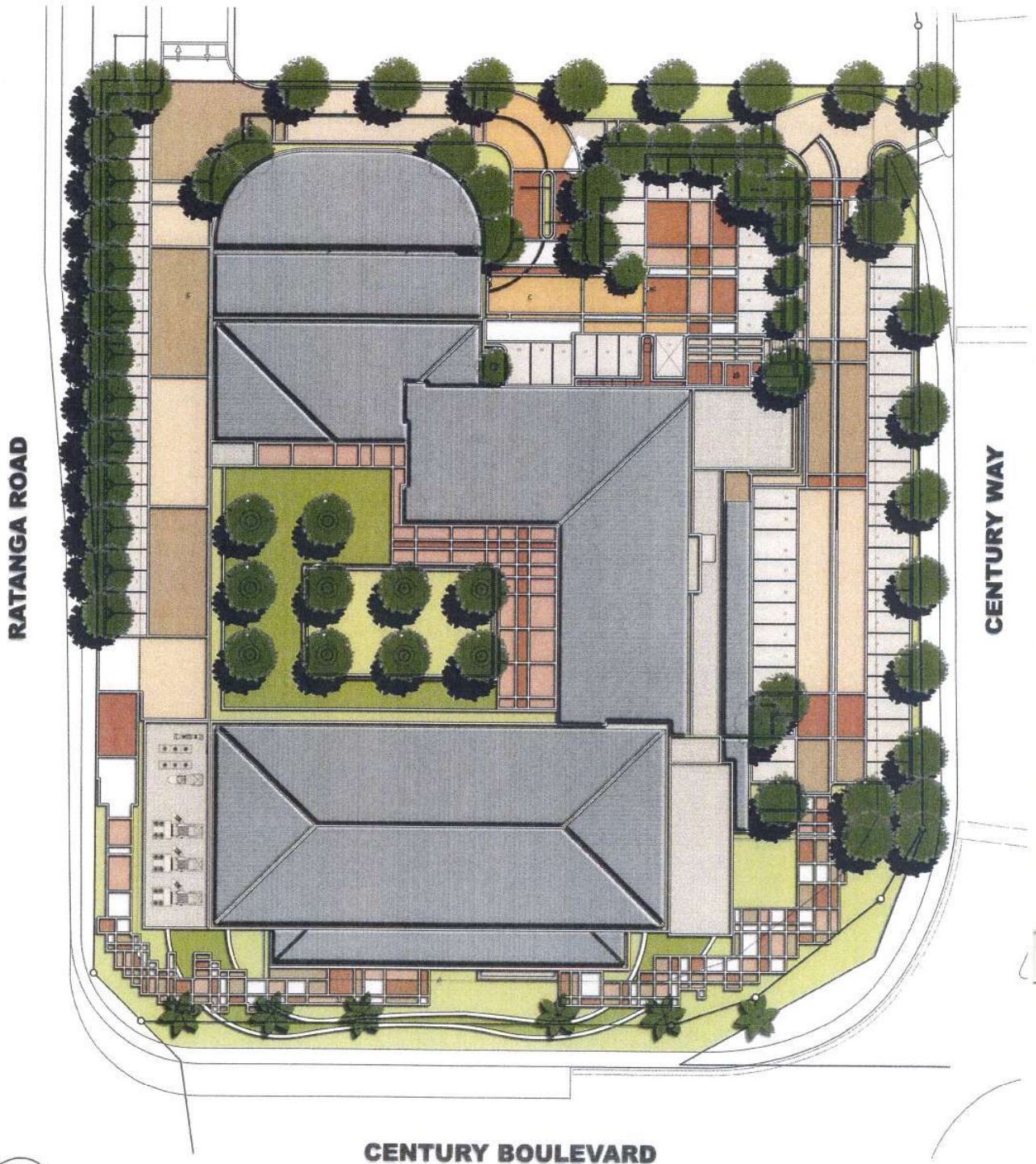
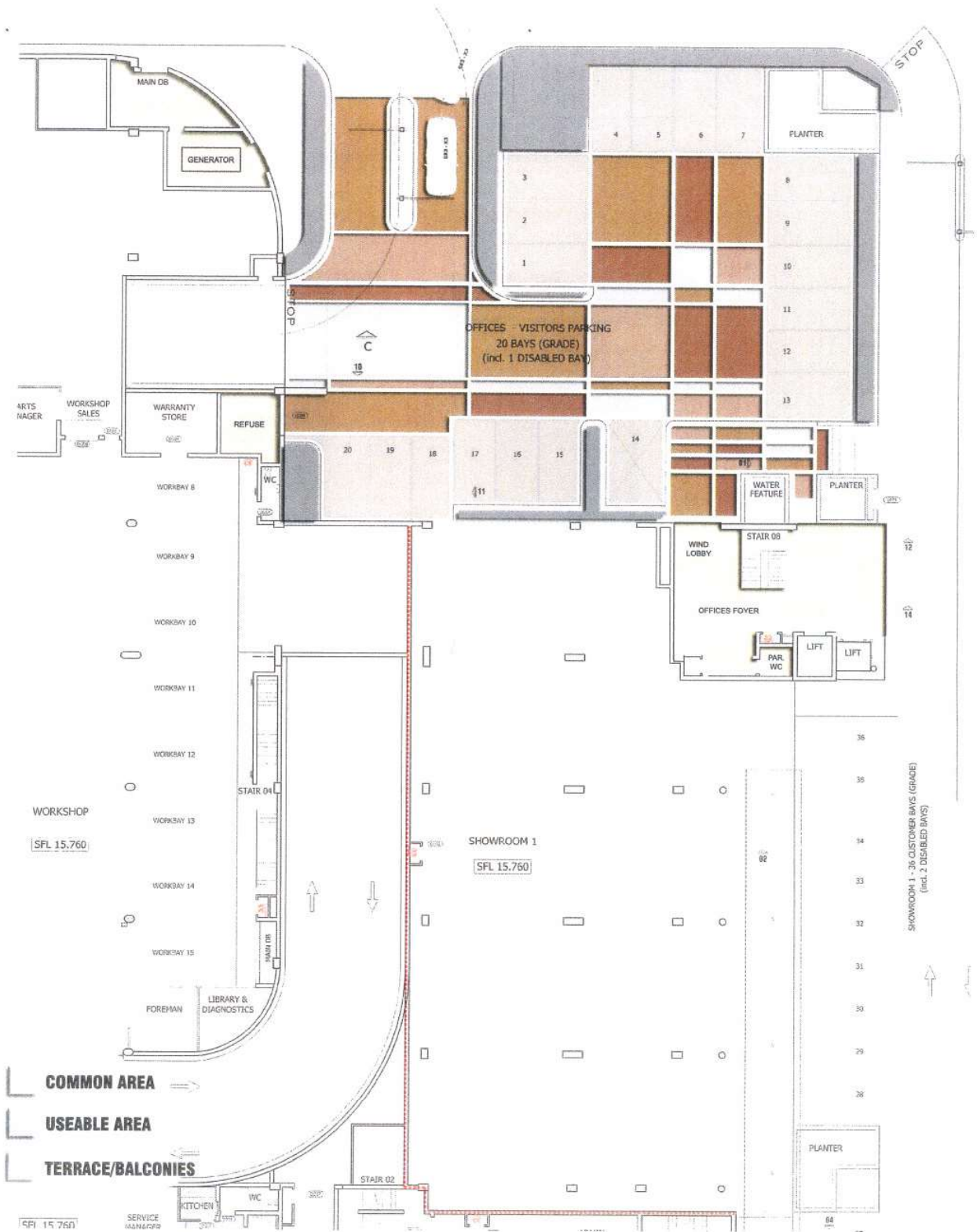


Site Plan



CENTURY BOULEVARD

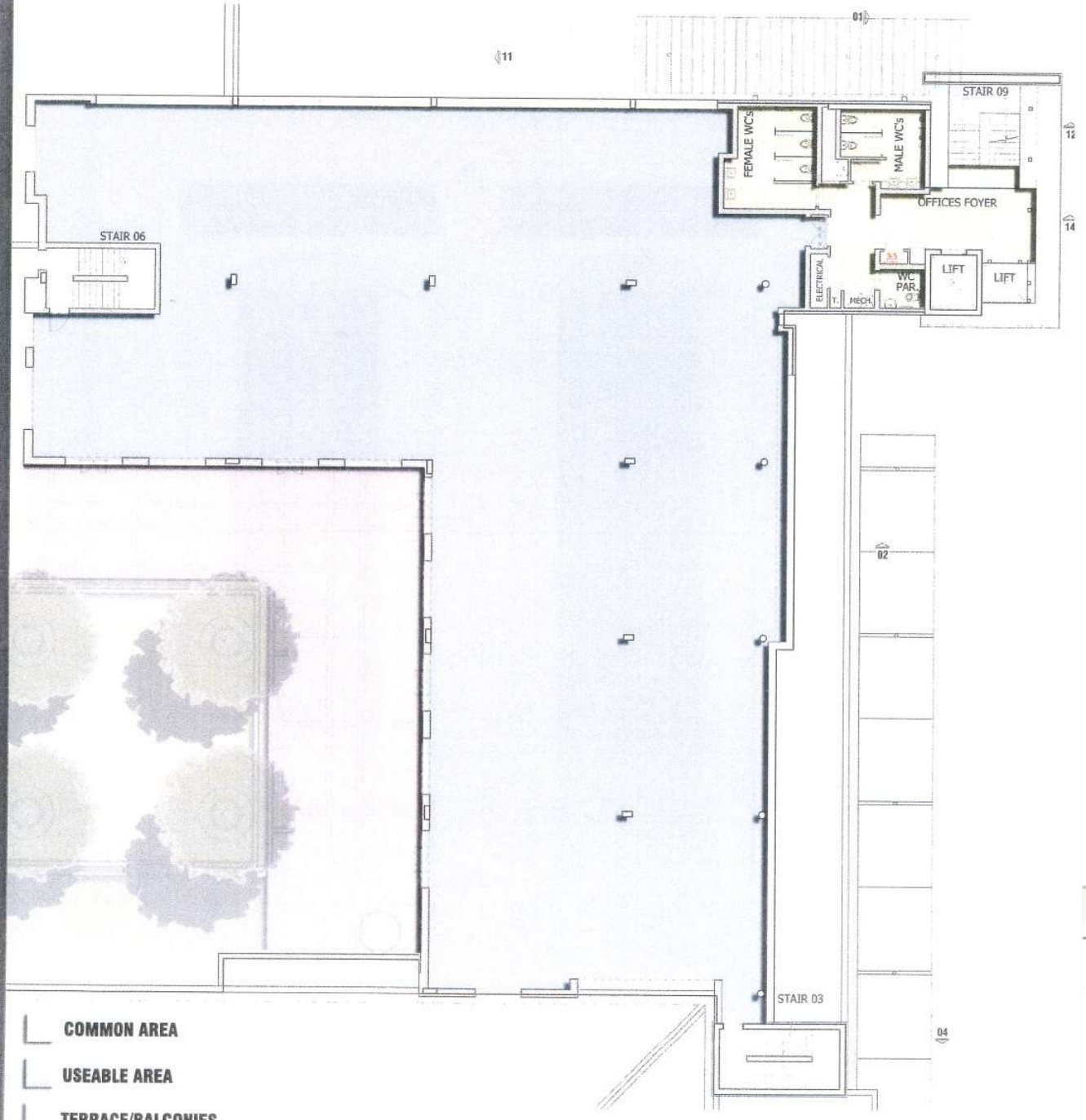
Offices Reception &
Visitors Parking - Ground Floor



THE GATEWAY - CENTURY CITY



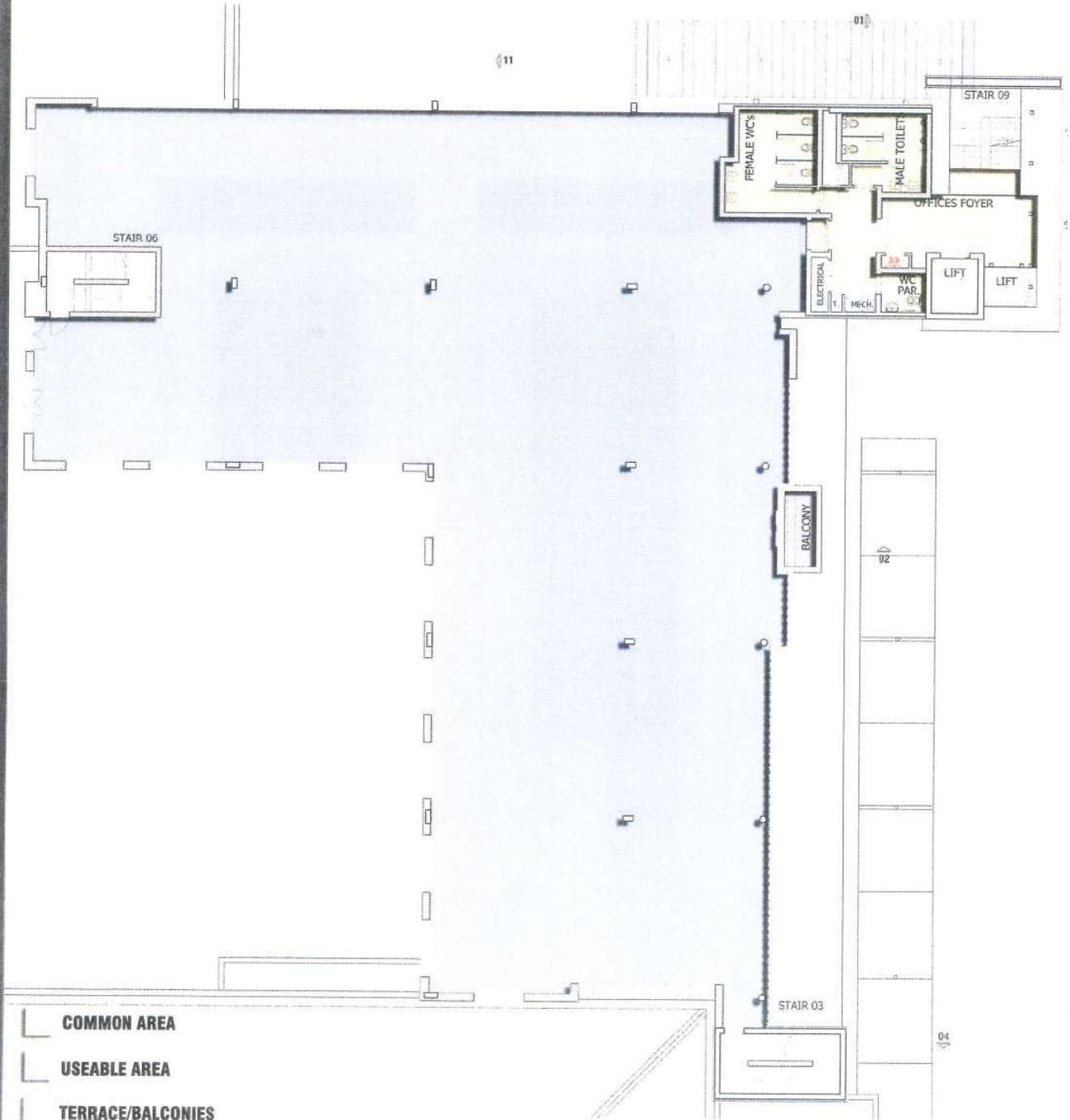
3rd Floor - Office Level 1



- COMMON AREA
- USEABLE AREA
- TERRACE/BALCONIES

GROSS RENTABLE AREA - 968m²

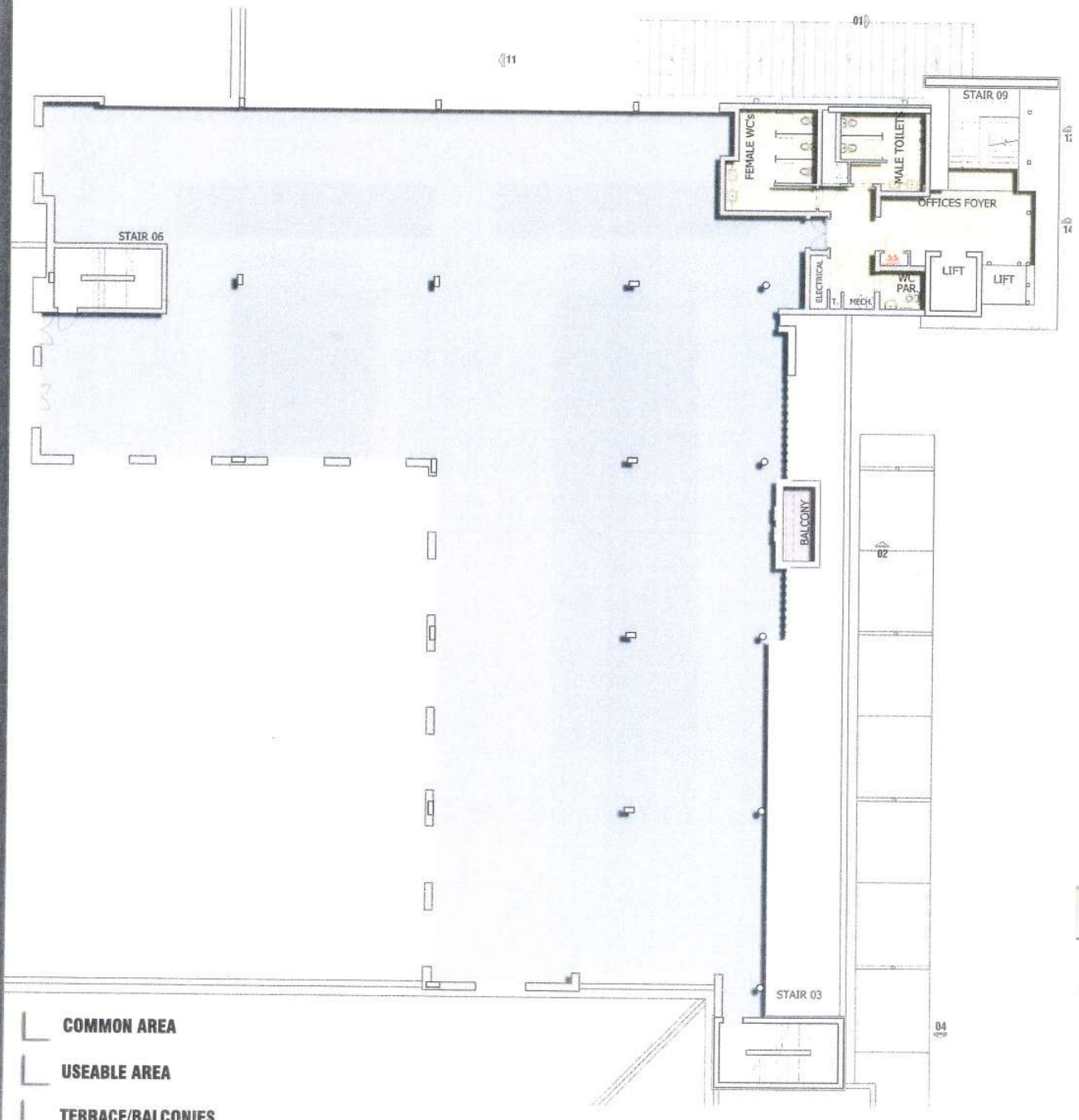
4th Floor - Office Level 2



- COMMON AREA
- USEABLE AREA
- TERRACE/BALCONIES

GROSS RENTABLE AREA - 966m²

5th Floor - Office Level 5



- COMMON AREA
- USEABLE AREA
- TERRACE/BALCONIES

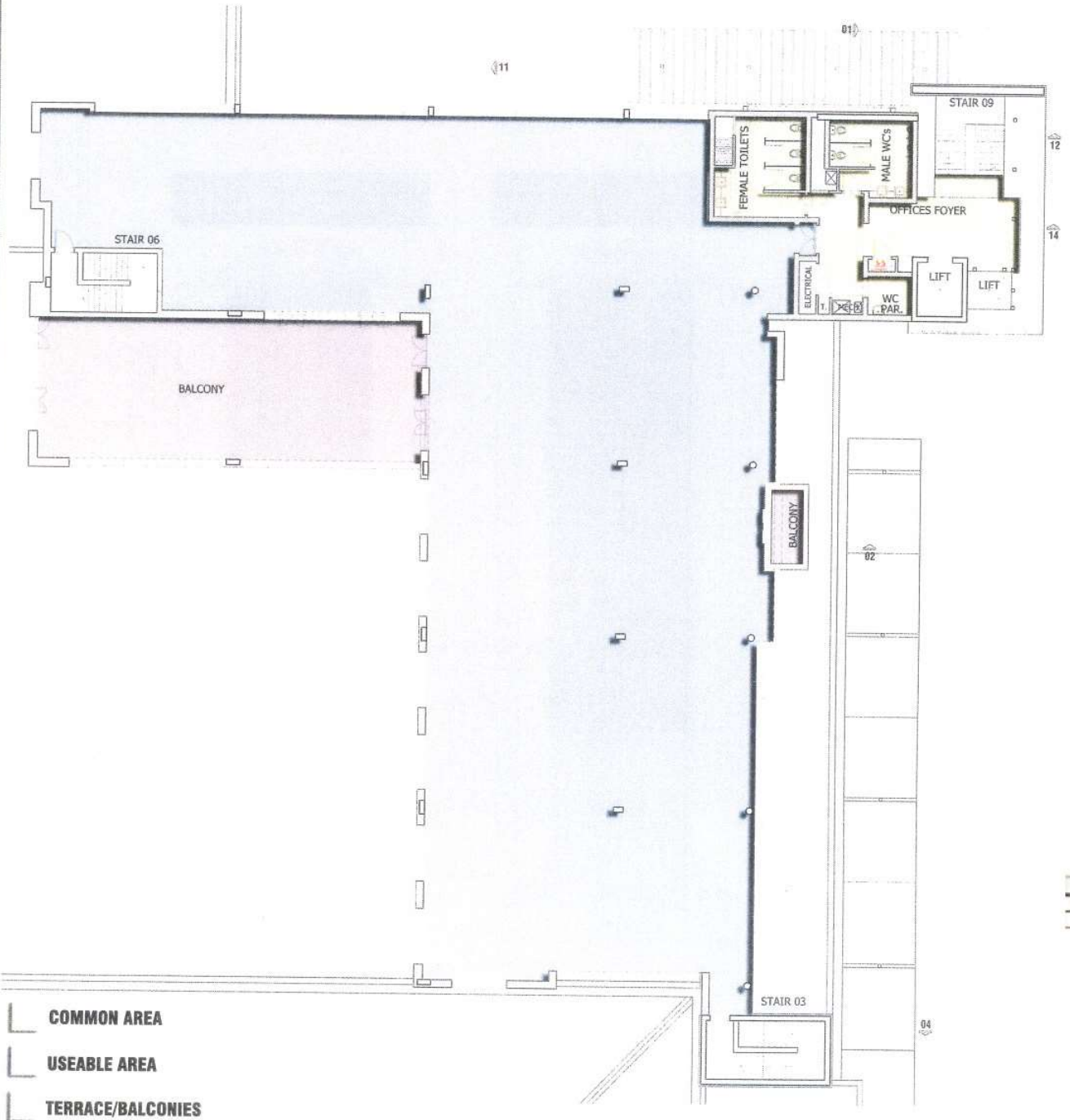
GROSS RENTABLE AREA - 966m²



THE GATEWAY - CENTURY CITY

rabie

6th Floor - Office Level 4



- COMMON AREA
- USEABLE AREA
- TERRACE/BALCONIES

GROSS RENTABLE AREA - 819m²